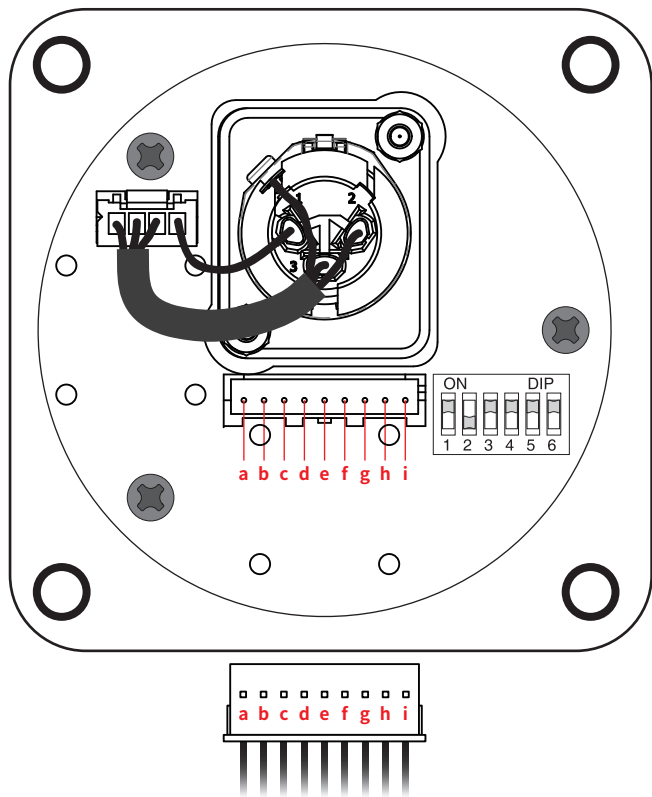


FM03 / FM04 接线配置

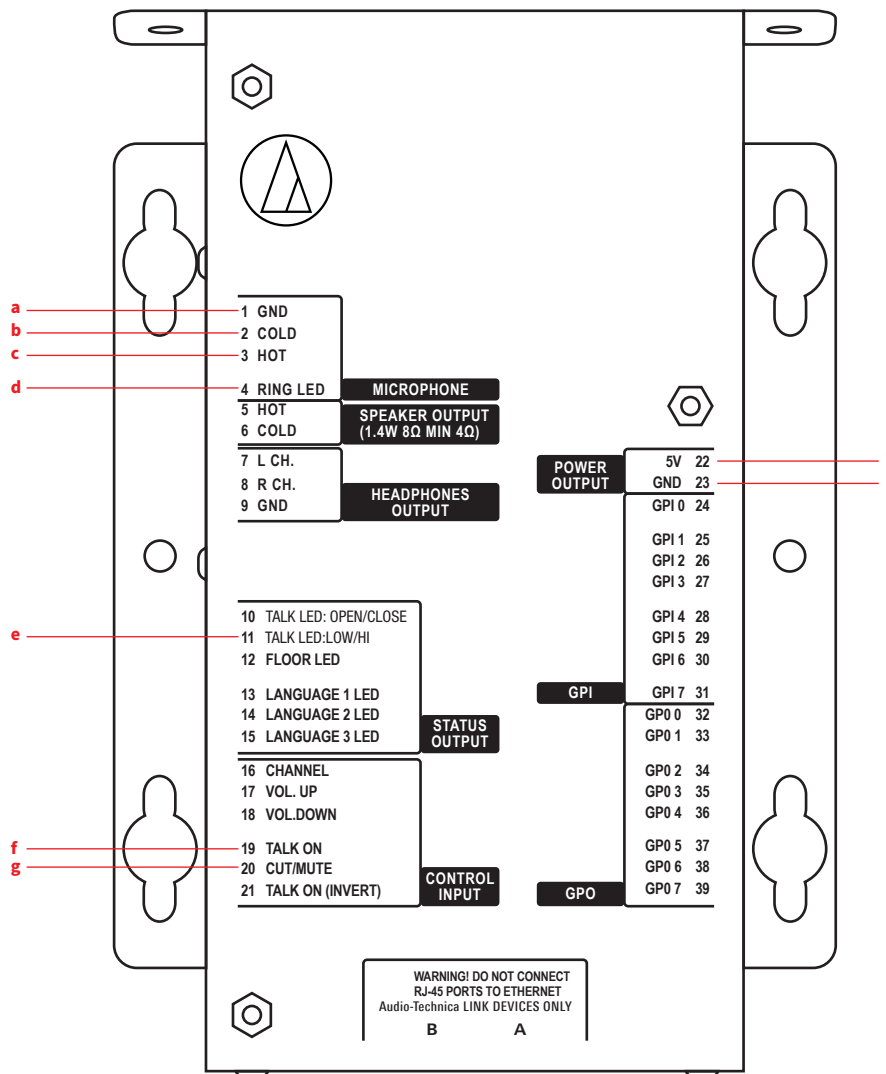
50IU-FM03 / 50IU-FM04



50IU-FM03 / 50IU-FM04

接线盒	接线分配名称	ATUC-50IU
a 黑色	Microphone	Ground 1
b 蓝色		Cold 2
c 白色		Hot 3
d 深蓝色	Ring LED	4
e 白色	Status Output	TalkLED : Low/ Hi 11
f 红色	Control Input	TalkOn 19
g 黑色		Cut / Mute (只限FM02) 20
h 黄色	Power Output	VDD 22
i 绿色		Ground 23

* a - c : 3 芯线 d - g : 4 芯线 h - i : 2 芯线



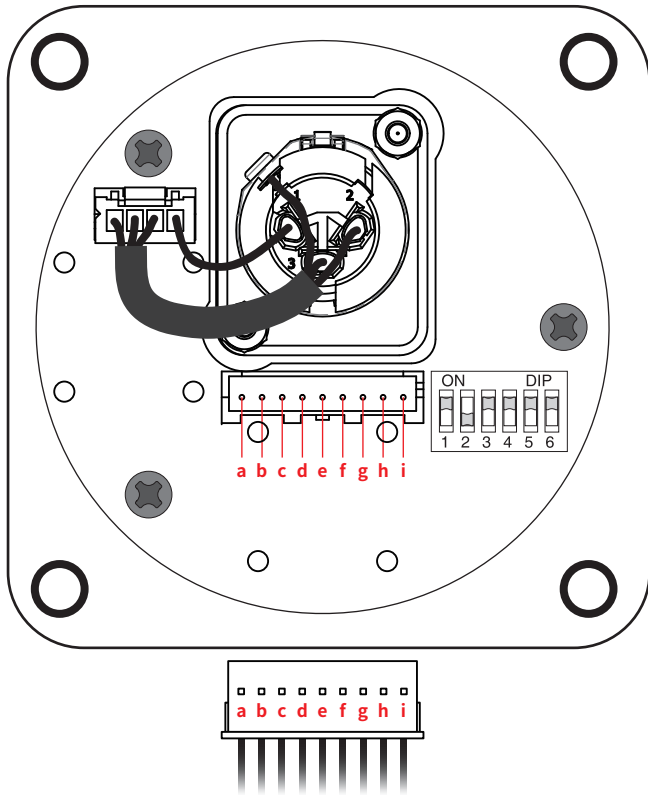
预期的连接电线规格

(FM03/FM04 至 ATUC-50IU) : 20AWG~26AWG

选项: 灯号颜色	发言开启	发言关闭
	红色	白色
	红色	关闭
	绿色	关闭
	绿色	白色
	红色	绿色
	绿色	红色

FM03 / FM04 Pin Assignment

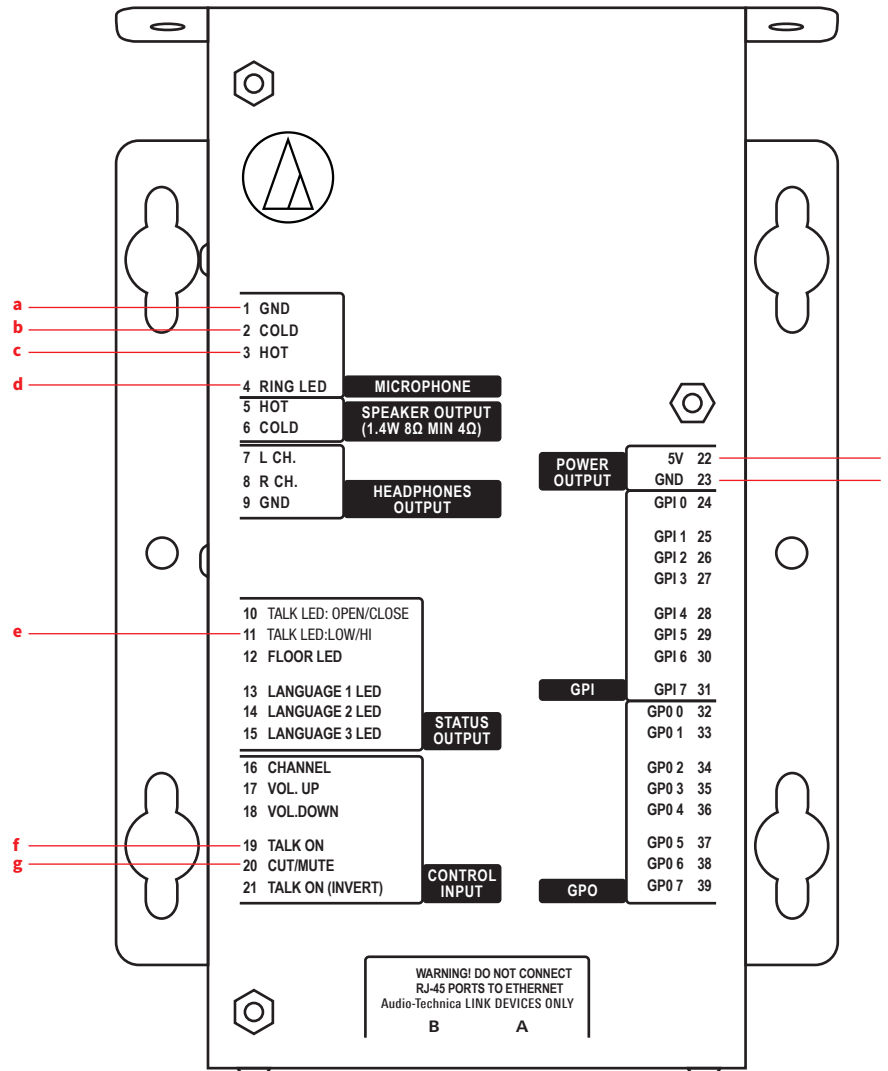
50IU-FM03 / 50IU-FM04



50IU-FM03 / 50IU-FM04

Terminal Block	Assigned Pin Name	ATUC-50IU	
a Black	Microphone	Ground	1
b Blue		Cold	2
c White		Hot	3
d Dark Blue		Ring LED	4
e White	Status Output	TalkLED : Low/ Hi	11
f Red	Control Input	TalkOn	19
g Black		Cut / Mute (FM02 Only)	20
h Yellow	Power Output	VDD	22
i Green		Ground	23

*a-c:3 core cable d-g:4 core cable h - i : 2 core cable



Connection Wire Specification
(FM03/FM04 to ATUC-50IU) : 20AWG - 26AWG

Select : LED Color	Talk On	Talk Off
	Red	White
	Red	Close
	Green	Close
	Green	White
	Red	Green
	Green	Red